



# GAT MONTHLY MEMBERSHIP PROGRESS REPORT

Results as of: 3/31/2023

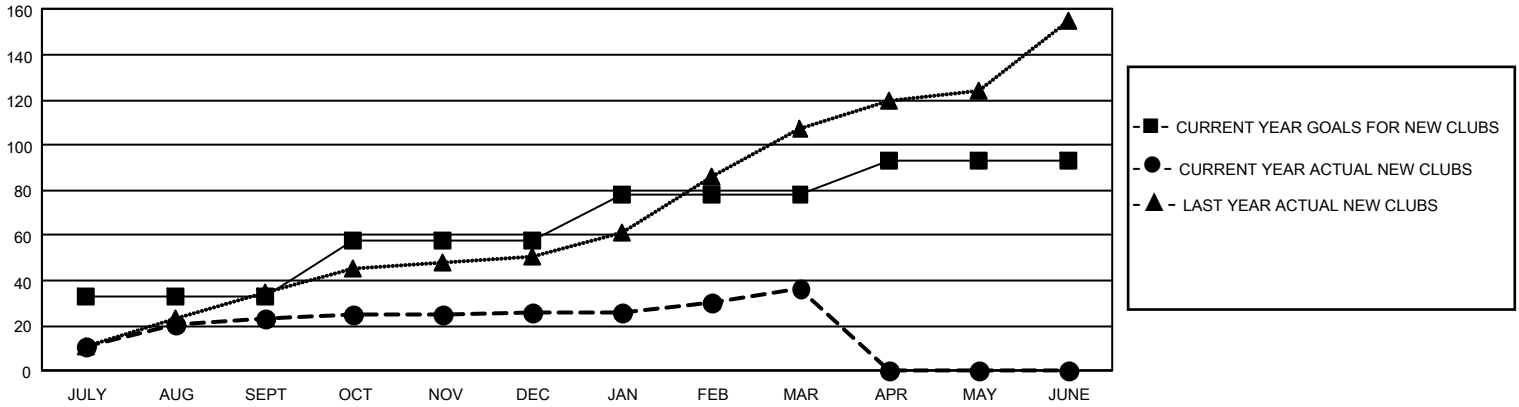
## GMT Constitutional Area 6, Group K

REPORT DOES NOT INCLUDE CLUBS IN UNDISTRICTED AREAS.

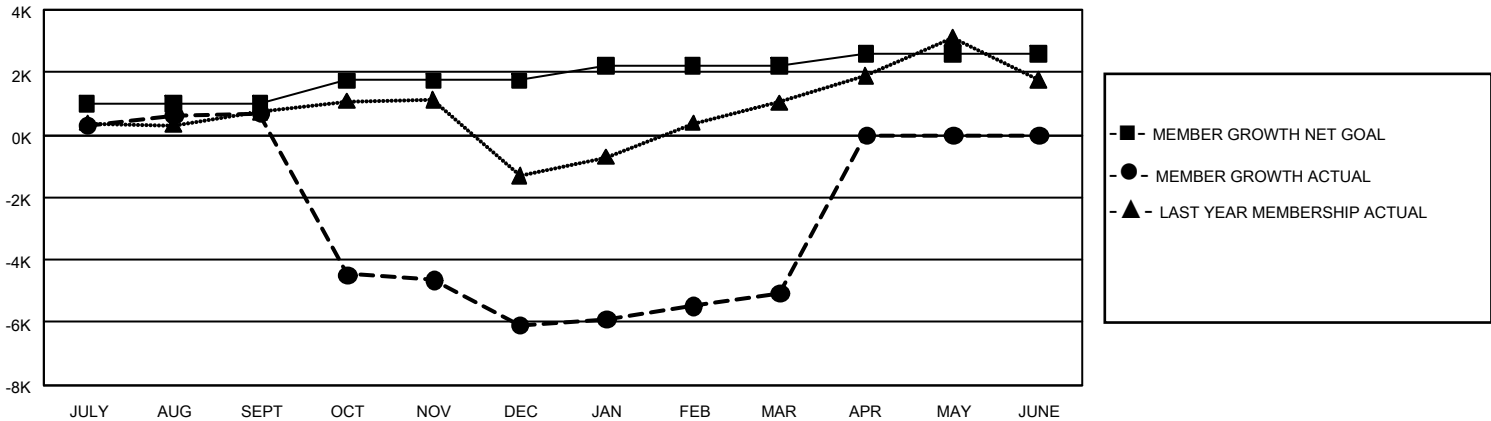
Clubs			
RESULTS FOR 2022-2023			
QUARTER	NEW CLUB GOAL	NEW CLUBS	DROPPED CLUBS
JULY/AUG/SEPT	99	23	14
OCT/NOV/DEC	75	3	304
JAN/FEB/MAR	60	11	13
APR/MAY/JUNE	45	0	0

Members			
RESULTS FOR 2022-2023			
QUARTER	MEMBER GROWTH NET GOAL	MEMBER GROWTH ACTUAL	DROPPED MEMBERS ACTUAL (including transfers)
JULY/AUG/SEPT	985	2,022	1,095
OCT/NOV/DEC	750	715	7,431
JAN/FEB/MAR	470	1,750	408
APR/MAY/JUNE	380	0	0

GOALS AND ACTUAL NEW CLUBS CUMULATIVE



GOALS AND ACTUAL MEMBERS CUMULATIVE



<b>DROPPED CLUBS: 331</b>	622 CLUBS OF 1,521 ADDED 1 OR MORE NEW MEMBERS	<b>GENDER DISTRIBUTION</b>	
		MALE 25,335 (65.11%) FEMALE 13,561 (34.85%) NON BINARY 1 (0.00%) PREFER NOT TO ANSWER 16 (0.04%)	
<b>DROPPED MEMBERS</b>		<a href="#">CLICK HERE FOR CUMULATIVE MEMBERSHIP DATA</a>	TOTAL FAMILY UNIT MEMBERS 21,837
DECEASED 62 CLUB CANCELLED 6,497 OTHER 2,374 <b>TOTAL 8,933</b>	FAMILY MEMBERS PAYING HALF DUES 12,743		